

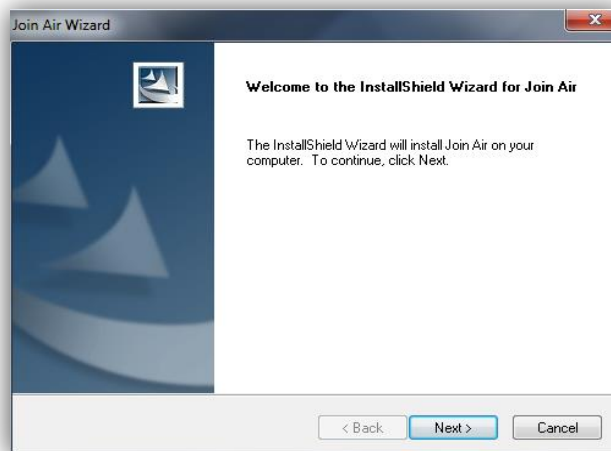
ZTE

Dongle Installation for Windows



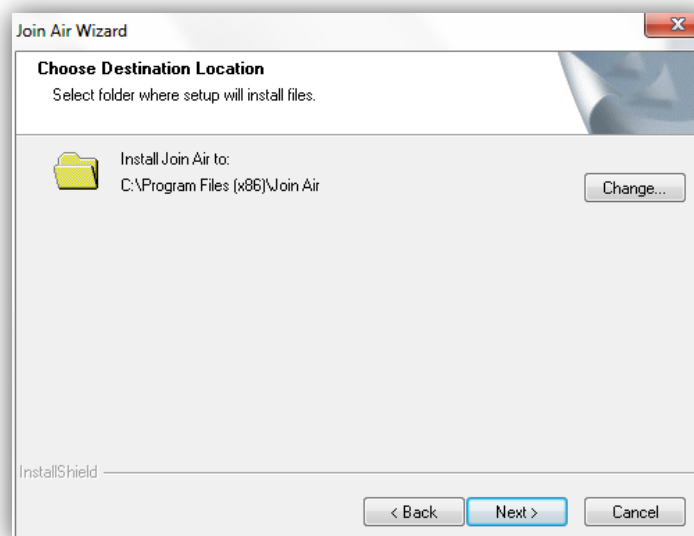
Plug the dongle, and wait for the **Join Air Wizard** to start

- Click **Next**



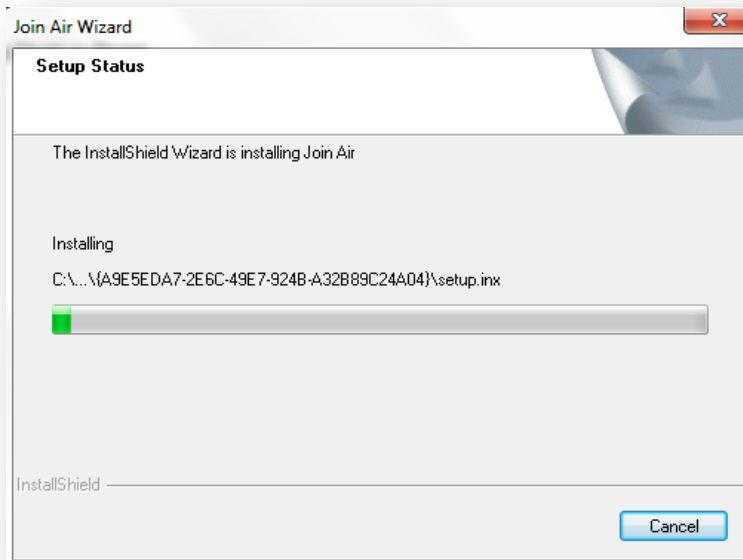
Choose Destination Location

- Click **Next**

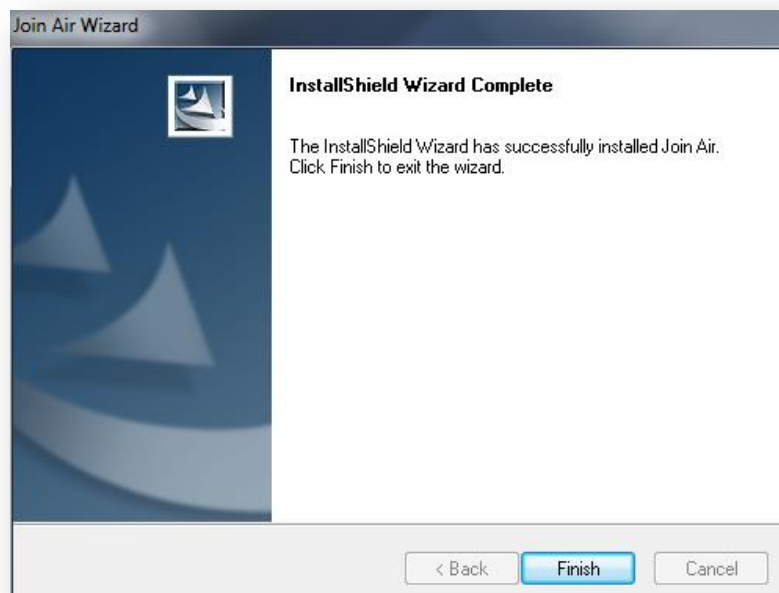


Setup Status Page

- Wait for the download to finish



Click Finish



ZTE

Dongle Installation for Windows



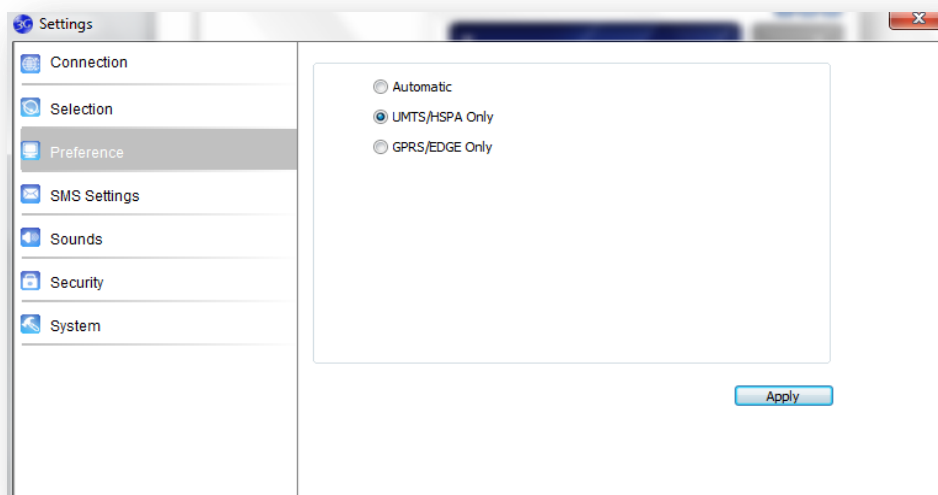
On the homepage of the ZTE dashboard

Click on **Settings**



Settings window

- Select **Preference**
- Select **UMTS/HSPA Only**
- Click **Apply**



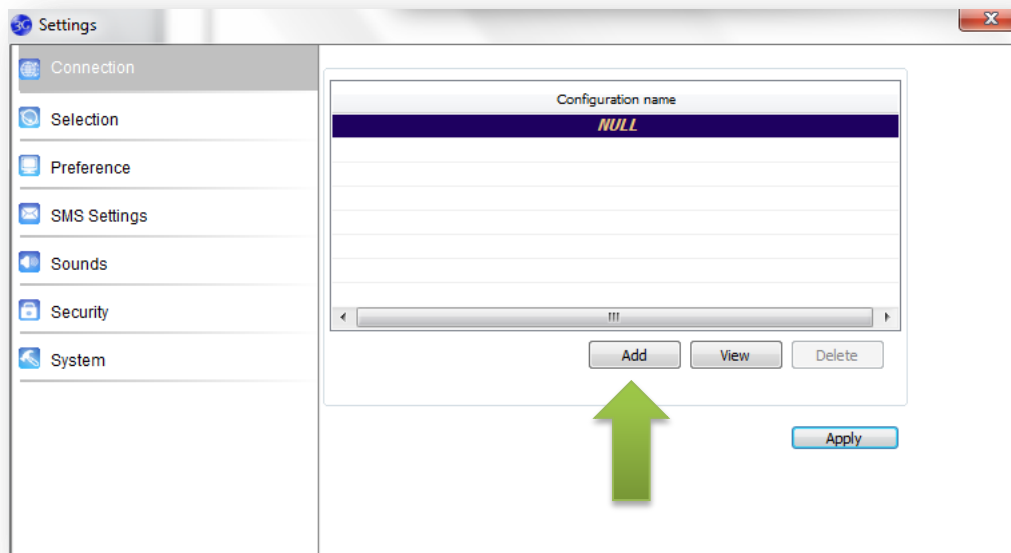
ZTE

Dongle Installation for Windows



Settings window

- Select **Connection**
- Click on **Add**



Connection window

- Select **Common** tab
- Enter the information as follow
 - Config name: **wahoo**
 - Dial number: ***99#**
 - APN select: **misp.wahooproviders.com**
- Click **Save**

ZTE

Dongle Installation for Windows



Connection

Common Advance

Config File

Config name

Dial number

APN

Obtain APN address automatically

Use the following APN address

User name

User name

Password

Save Cancel

Click **OK**

Connection

Set Succeed!

OK

ZTE

Dongle Installation for Windows



ZTE dashboard

- Click on the **connect** button

